

HERSHBERGER REAL ESTATE & CHATTEL AUCTION

HOLMESVILLE/SHREVE AREA

10745 TR 516, SHREVE, OH 44676 | HOLMES COUNTY

THURSDAY, JUNE 1, 2017 – 3:00 PM

OPEN HOUSE: WEDNESDAY, MAY 24, 5:00 – 7:00 P.M.

Excellent Home and Barn on 4.5 acres | Ripley Twp | Holmes County | West Holmes Schools
Beautiful Setting | Good Pasture | Creek | Tools | Hand Plane Collection | Antiques | Collectibles | Household



Kaufman
Realty & Auctions

330-403-4036 | www.kaufmanauction.sale

Jr. Miller | Realtor, Auctioneer
330-231-1914 | jr@kaufmanrealty.com

10745 TR 516, SHREVE, OH 44676 | HOLMES COUNTY



THURSDAY, JUNE 1, 2017 – 3:00 PM

A well built and maintained property inside and out. Built in 1996 the home has a large kitchen and dining area, walk-in pantry, large living room. There are a total of 5 bedrooms and 3 baths, included in the above is an in-law suite that has an additional kitchen/dining area. The full walkout basement has a summer kitchen and 3 of the above bedrooms. Natural gas hot water heat as well as nat. gas heat stove. Natural gas lights throughout the home. Private water well and septic. New roof in 2010.

The 30'x44' bank barn has 3 box stalls and 3 tie stalls. The second level has a nice 28'x30' insulated/finished shop area. The land is mostly level with a creek and offers additional building sites. Don't miss this one! **Real Estate sells at 6:00 p.m. Call Jr. Miller for more details.**

Taxes and Legal: Holmes County parcel number 2300864002. Taxes are currently \$1,387.03 per ½ year.

Terms on Real Estate: 10% nonrefundable down payment made day of auction, balance due at closing. No financing contingencies. Any required inspections must be completed prior to bidding. All information contained herein derived from sourced deemed reliable but not warranted.

CHATTELS AT 3:00 P.M.

Tools, Lumber & Misc.: Stihl 023 chainsaw; Delta table saw; 18" Woodmaster planer-molder-sander; Jet wood band saw with 3/8" blade; Ridgid steel bandsaw with 1/2" blade; come-a-long; standing seam crimper; 5/4 curly Beech and Ash (kiln dried); reclaimed wormy chestnut; odds and ends reclaimed lumber;

Antiques and Collectibles: beam boring hand drill press; old hatchets; wooden pulleys; well pulley; handsaws; crosscut saws; ice tongs; hay and draw knives; cant hook; old wooden high chair that converts into stroller(ext. condition); hand crank laundry wringer; #80 Dazey churn; ½ cup Dazey churn; Singer handheld ship sail sewing machine; sad irons; railroad lantern; kitchen graniteware; old jar collection; wooden carpenters chest; hand water pump; folding carpenter ruler; hand drills; old hammers; screwdrivers; corner chisels; wood bit set; small & big scythes; misc. items; old windows; metal 10 hole laying nest

Stanley Hand Planes & Misc: #55 trim plane; #45 trim plane; Bailey Stanley #5 plane; 2 Bailey Stanley #4 planes; Stanley Bedrock 605 ½ plane; #220, #130, #80, #71 and #192 Stanley planes; Bailey Stanley #28 plane; Dunlap 107.1 plane; #408 Sargent plane; R-3 Lakeside plane; good wooden plane; Fulton plane; Great Neck C4 plane (NIB); Yankee 2100-12" bit brace drill with set of 50 wood bits; Union #28 plane

Household: timber frame couch w/ 2 chairs; end tables; coffee table; boxes of misc.; other household items not listed;

NOTE: Good clean auction.

Terms on Chattels: Cash or good check.

LUNCH STAND

Auction by order of: Jonas & Marie Hershberger



HOLMESVILLE/SHREVE AREA

10745 TR 516, SHREVE, OH 44676



Hershberger Real Estate & Chattel Auction

THURSDAY, JUNE 1, 2017 – 3:00 PM



Kaufman

Realty & Auctions

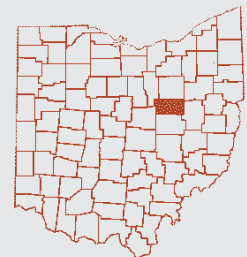
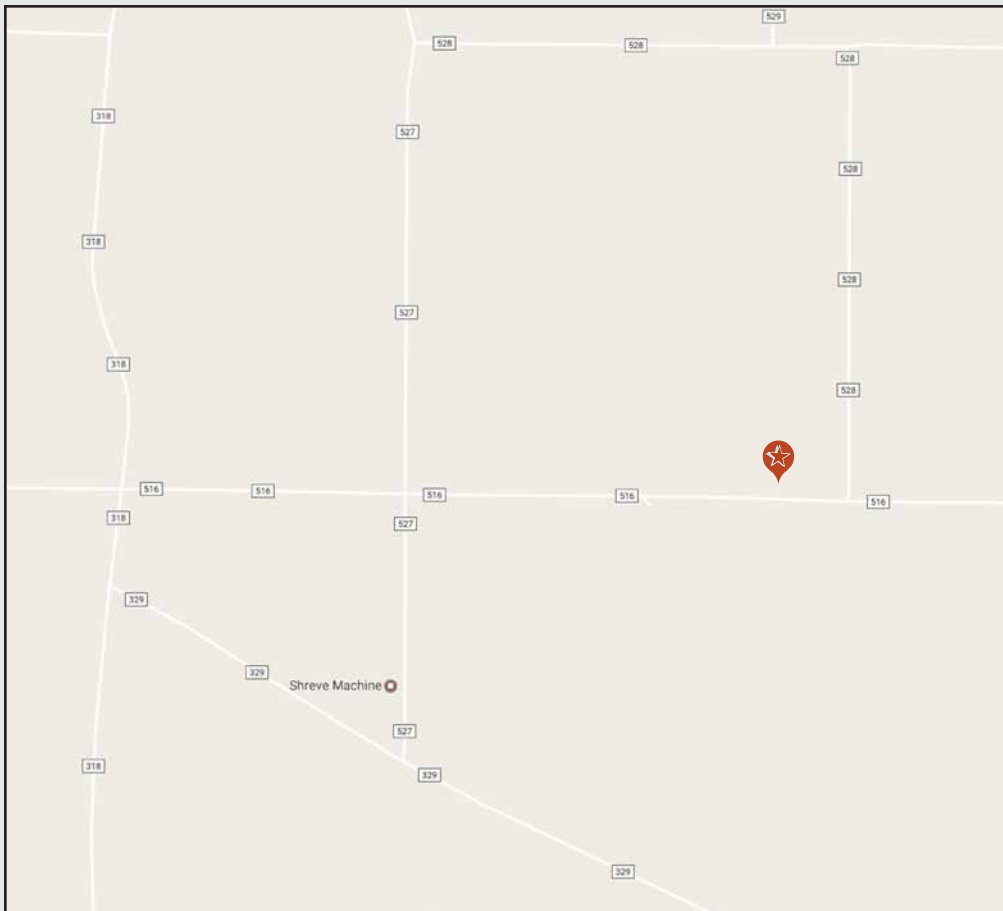
330-403-4036

www.kaufmanauction.sale

PO Box 422, Sugarcreek, Ohio 44681



TERMS: 10% nonrefundable down payment made day of auction, balance due at closing. No financing contingencies. Any required inspections must be completed prior to bidding. All information contained herein derived from sourced deemed reliable but not warranted.



**10745 TR 516
SHREVE, OH 44676
Holmes County**

LOCATION: From Holmesville Oh take CR 320 west ½ mile to CR 329, continue west approx. 4 miles to TR 527 north 1/3 mile to TR 516 east ½ mile to location. From CR 1, just south of Shreve, take CR 318 south 1 mile to TR 527 south 1 mile to TR 516 east to auction. Signs posted.