

HOLMES COUNTY

7455 SR 39, MILLERSBURG, OH 44654



Schlabach Real Estate & Chattel Auction

WEDNESDAY, NOVEMBER 15, 2017
CHATELS 10:00 AM – REAL ESTATE 12 NOON



Kaufman

Realty & Auctions

(330) 403-4036

www.KaufmanAuction.sale

PO Box 422, Sugarcreek, Ohio 44681



TERMS: 10% nonrefundable down payment made day of auction, balance due at time of closing. No financing contingencies. Offered in parcels and in combination. Any required inspection must be completed prior to bidding. All information contained herein derived from sources deemed reliable but not warranted. Announcements made day of sale take precedence over any previous advertising.

HOLMES COUNTY



6+ Acres

2 Parcels

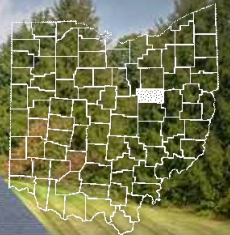
6,600+ Sq. Ft.
Profession Bldg.

Holmes County

Office Furniture

Optical Equipment

7455 State Route 39
MILLERSBURG, OH
Holmes County



Schlabach Real Estate & Chattel Auction

WEDNESDAY, NOVEMBER 15, 2017
CHATELS 10:00 AM – REAL ESTATE 12:00 NOON

OPEN HOUSE: TUESDAY, NOVEMBER 7 – 4:00-6:00 PM

Directions: Approx. 3 miles east of Millersburg on SR 39 (US 62).
On the corner of SR 39 & TR 336. Signs posted.

Parcel 1: Location is the key for this 6,600 sq. ft. professional brick building built in 1987. Building features 12+ private exam rooms, private offices, reception – showroom & waiting room, conference rooms, employee work areas and much more. Updates include newer furnaces, air conditioners, roof, and water pump. This parcel also has an EPA approved well & septic system all on 5 acres. With a location like this, there could be unlimited potential.

Parcel 2: 1.4+ Acre corner lot with frontage on SR 39 (US 62) and TR 336. Potential building lot or excellent investment property.

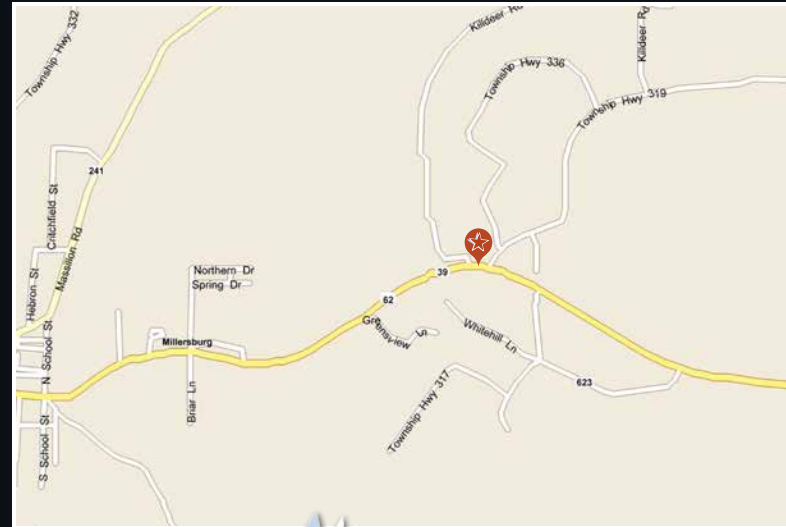
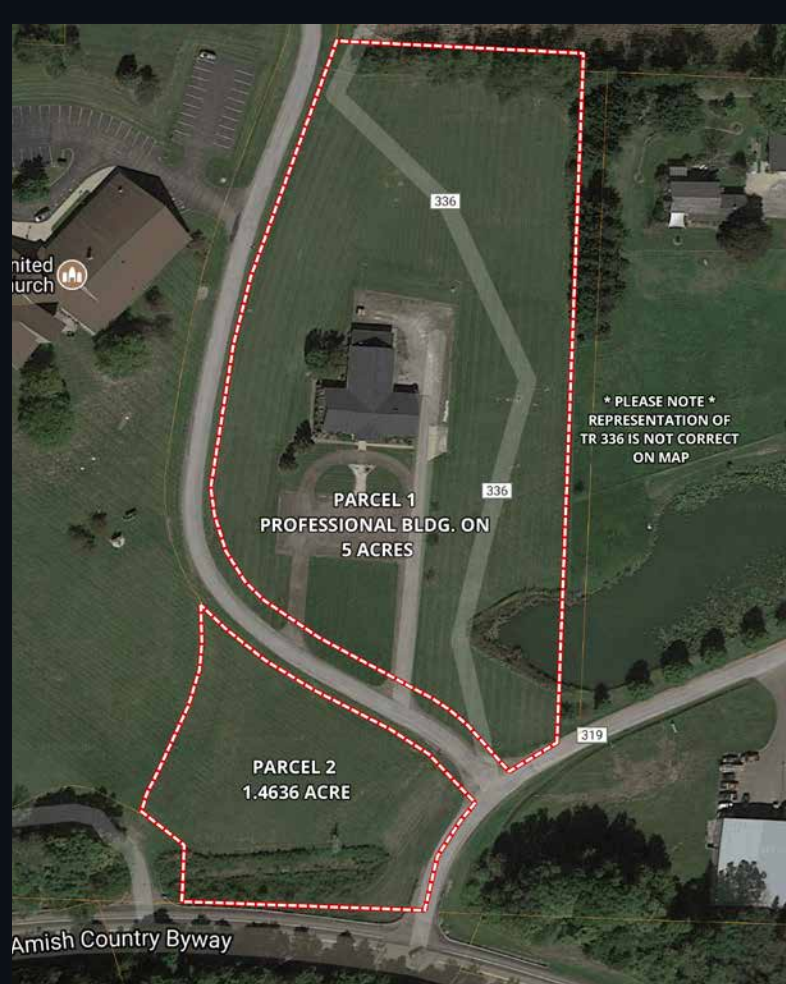
Real estate sells at 12 noon. For a private showing of the property contact Randy Starner at 330-473-9230 or Derrick Kandel at 330-231-4524.

Taxes and Legal: Holmes County parcel #0601022003 & 0601022004 located in Hardy Twp. in West Holmes SD. Taxes currently \$4,340.67 per half.

Terms on Real Estate: 10% nonrefundable down payment made day of auction, balance due at time of closing. No financing contingencies. Offered in parcels and in combination. Any required inspection must be completed prior to bidding. All information contained herein derived from sources deemed reliable but not warranted. Announcements made day of sale take precedence over any previous advertising.

*****Watch for upcoming ads for optical equipment & furniture.**

Sale by Order of: Dr. Roy & Marilyn Schlabach



(330) 403-4036 | KaufmanAuction.sale

**Derrick Kandel | Realtor, Auctioneer
330-231-4524 | derrick@kaufmanrealty.com**

**Randy Starner | Realtor
330-473-9230**