

CAMBRIDGE CITY SCHOOLS REAL ESTATE & CONTENTS AUCTION

2 HOMES, WAREHOUSE, EVENT CENTER, CHAPEL & TIMBER ON 35 ACRES

6111 FAIRDALE DRIVE, CAMBRIDGE, OH 43725 | GUERNSEY COUNTY

REAL ESTATE ENDS WEDNESDAY, DEC. 20, 2017 - 3:00 PM*
PERSONAL PROPERTY ENDS THURSDAY DEC. 21, 2017 - 3:00 PM*

PROPERTY TOURS/ INSPECTION DATES:

MONDAY DEC. 4 - 4:00-6:00 PM | SATURDAY DEC. 9 - 1:00-4:00 PM.

2 Brick Ranch Homes | Cambridge Twp. - Guernsey Co. | Cambridge City Schools | 6 Parcels
Marketable Timber | Building Lots | Vehicles and Mowers | Lockers Desks & Chairs | Tools

ONLINE
AUCTION

**Kaufman**
Realty & Auctions

(866) 782-8172 | KaufmanAuction.sale

Jason L. Miller | CAI Auctioneer
740-541-7475 | jason@kaufmanrealty.com

A unique Real Estate on the west edge of Cambridge offering multiple commercial and residential opportunities limited only by your imagination. There are 2 homes on the property each on 1/2 +/- acre built in 1978 and can serve as a home or an office. The multiple commercial buildings consist in part of a 54' x 107' Morton building with concrete floor and electricity, a former chapel and event center, church camp style barrack buildings as well as garage and shop buildings. With easy and convenient access to I-70 and US 40 this property would make an excellent home base for a contractor and builder. There is room for expansion for new structures or renovation of the existing building. All bidding will be online using our "Ultimate Choice" software allowing you to bid via phone, tablet or computer on any parcel or combination of parcels at your convenience and in the comfort of your home, car or office.

For bidding assistance please call auctioneers.

Parcel 1 - 3 bedroom Brick Ranch Home basement and garage on 1/2 Acre

Parcel 2 - Brick Ranch Home or Office on 1/2 Acre

Parcel 3 - 3+/- Acres with Chapel and Event center building along with block structure used as a wood shop and storage.

Parcel 4 - 13+/- Acres with 54'x107' Morton Building, 2 block structures and a garage. Land is open and wooded with commercial septic. Includes pond.

Parcel 5 - 17 +/- Acres all wooded acreage with access from Pethtel Ln.

Parcel 6 - Marketable timber from acreage on Parcels 4 & 5. Timber to be harvested as outlined in timber contract. Contact auctioneers for terms.

***See website for complete bidding terms.**

Terms on Real Estate: 10% nonrefundable down payment made within 24 hours of auction closing, balance due in 45 days at closing. No financing contingencies. Any required inspections must be completed prior to bidding. Property will be sold "As Is" with no warranties. Announcements and updates made prior to auction closing will take precedence over all previous advertising. Cambridge Board of Education can accept or reject all bids.

Legal: Guernsey County Parcel #020003774000, 020003809000 & 020003774002. Cambridge Twp., Cambridge City Schools. Taxes TBD.

Watch future ads for personal property list or go to website for bidding catalog.

Personal Property/Chattel Terms: ID required for registration. Cash, check and credit card accepted. All items must be paid in full prior to removal. Load out day is Friday December 22nd from 9-5. See web site for additional terms.

Sale by the Order of: Cambridge City Schools Board of Education





**2 HOMES, WAREHOUSE, EVENT CENTER,
CHAPEL & TIMBER ON 35 ACRES**

6111 FAIRDALE DR, CAMBRIDGE, OH 43725



Realty & Auctions

(866) 782-8172

www.KaufmanAuction.sale

PO Box 422, Sugarcreek, Ohio 44681



TERMS: 10% nonrefundable down payment made within 24 hours of auction closing, balance due in 45 days at closing. No financing contingencies. Any required inspections must be completed prior to bidding. Property will be sold "As Is" with no warranties. Announcements and updates made prior to auction closing will take precedence over all previous advertising. Final bids are subject to confirmation of the Cambridge Board of Education.

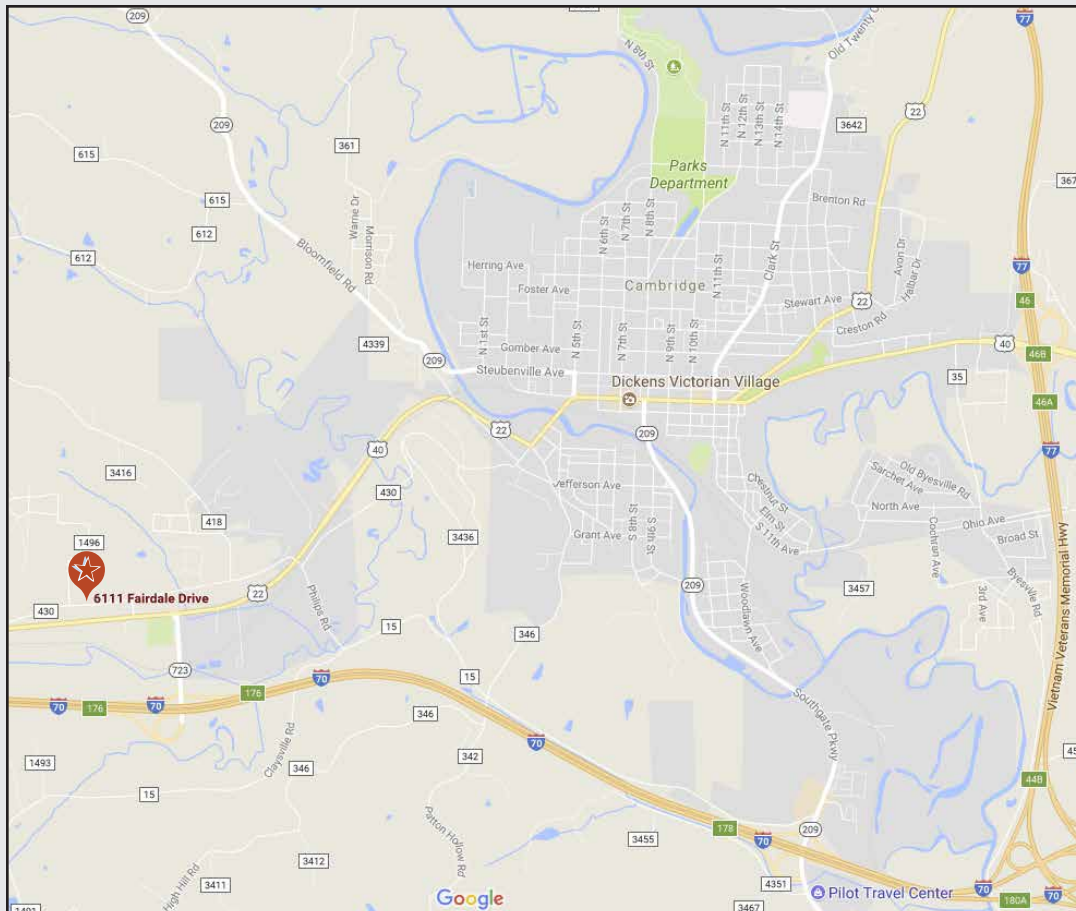
**Cambridge City Schools
Real Estate & Contents Auction**

REAL ESTATE ENDS

WEDNESDAY, DEC. 20, 2017 - 3:00 PM*

PERSONAL PROPERTY ENDS

THURSDAY DEC. 21, 2017 - 3:00 PM*



**6111 Fairdale Drive
CAMBRIDGE, OH
Guernsey County**

DIRECTIONS: From Cambridge OH. follow US 22/ US 40 West to Fairdale Dr. then continue west 1/2 mile to Property.